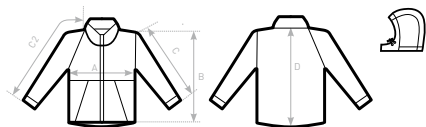
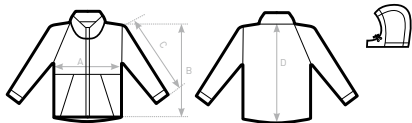


B&C HOODED SOFTSHELL /M. JM 950	XS	S	M	L	XL	2XL	3XL
A HALF CHEST	-	52	55	58	61	64	67
B BODY LENGTH FROM NECK POINT	-	66,5	69,5	72,5	75,5	78,5	80,5
C SLEEVE LENGTH	-	65	66	67	68	69	70
D CENTER BACK LENGTH	-	69	72	75	78	81	83

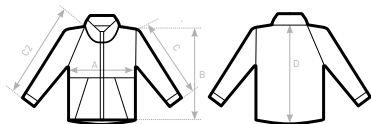


C2= RAGLAN

B&C HOODED SOFTSHELL /W. JW 937	XS	S	M	L	XL	2XL	3XL
A HALF CHEST	44	46	48	50	52	54	-
B BODY LENGTH FROM NECK POINT	59	61	63	65	67	69	-
C2 SLEEVE LENGTH FROM NECK POINT FOLLOWING THE CURVE	67,5	69,5	71,5	73,5	75,5	77,5	-
D CENTER BACK LENGTH	62	64	66	68	70	72	-

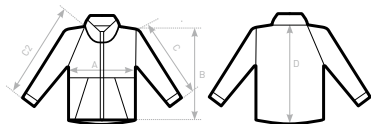


B&C HOODED SOFTSHELL /K. JK 969	3/4	5/6	7/8	9/10	11/12	13/14
		110/116	122/128	134/140	146/152	158/164
A HALF CHEST	-	38,5	41	43,5	46	48,5
C SLEEVE LENGTH	-	42	47	52	56	60
D CENTER BACK LENGTH	-	50	54	59	64	69



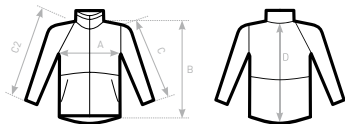
C2= RAGLAN

B&C X-LITE SOFTSHELL /M. JM 951	XS	S	M	L	XL	2XL	3XL
A HALF CHEST	-	52,8	55,8	58,8	62,8	66,8	70,8
B BODY LENGTH FROM NECK POINT	-	68,5	70	71,5	73	74,5	76
C2 SLEEVE LENGTH FROM NECK POINT	-	79	80,4	81,8	84	86,2	88,4
D CENTER BACK LENGTH	-	65,6	67,2	68,3	70,1	71,4	73,2



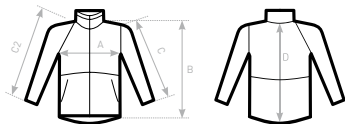
C2= RAGLAN

B&C X-LITE SOFTSHELL /W. JW 938	XS	S	M	L	XL	2XL	3XL
A HALF CHEST	44,5	47,5	50,5	53,5	57,5	61,5	-
B BODY LENGTH FROM NECK POINT	63	64,5	66	67,5	69	70,5	-
C2 SLEEVE LENGTH	72,2	73,7	75,1	76,5	78,7	80,9	-
D CENTER BACK LENGTH	63	64,1	65,2	66,8	68,1	69,9	-



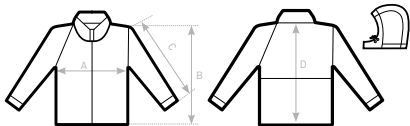
C2- RAGLAN SLEEVE

B&C ID.701 JU 162	XS	S	M	L	XL	2XL	3XL
A HALF CHEST	-	53	56	59	62	65	68
B BODY LENGTH FROM NECK POINT	-	68	69,5	71	72,5	74	75,5
C SLEEVE LENGTH	-	63,5	65	66,5	68	69,5	71
D CENTER BACK LENGTH	-	71	72,5	74	75,5	77	78,5

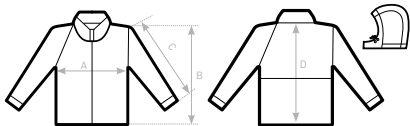


C2- RAGLAN SLEEVE

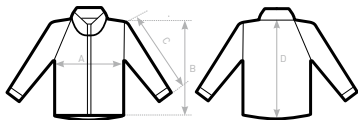
B&C ID.701 /WOMEN JW 163	XS	S	M	L	XL	2XL
A HALF CHEST	43	46	49	52	55	58
B BODY LENGTH FROM NECK POINT	57	59	61	63	65	67
C SLEEVE LENGTH	58	59	60	61	62	63
D CENTER BACK LENGTH	60	62	64	66	68	70



B&C SUPERHOOD /MEN JM 940	XS	S	M	L	XL	2XL	3XL
A HALF CHEST	-	55	58	61	64	67	70
B BODY LENGTH FROM NECK POINT	-	72	74	76	78	80	82
C SLEEVE LENGTH	-	67	68,5	70	71,5	73	74,5
D CENTER BACK LENGTH	-	69,5	71,5	73,5	75,5	77,5	79,5



B&C SUPERHOOD /WOMEN JW 941	XS	S	M	L	XL	2XL	3XL
A HALF CHEST	49	52	55	58	61	64	-
B BODY LENGTH FROM NECK POINT	61	63	65	67	69	71	-
C SLEEVE LENGTH	65,5	67	68,5	70	71,5	73	-
D CENTER BACK LENGTH	59	61	63	65	67	69	-



B&C REAL+ /MEN JM 970

A HALF CHEST

B BODY LENGTH FROM NECK POINT

C SLEEVE LENGTH

D CENTER BACK LENGTH

XS

S

M

L

XL

2XL

3XL

-

59,6

62,6

65,6

69,6

73,6

77,6

-

83

84

85

87

89

91

-

65,8

66,7

67,7

69,2

70,8

72,4

-

79,8

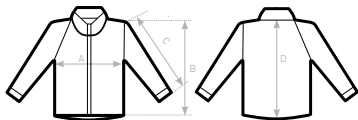
80,9

82

83,8

85,6

87,4



B&C REAL+ /WOMEN JW 925

A HALF CHEST

B BODY LENGTH FROM NECK POINT

C SLEEVE LENGTH

D CENTER BACK LENGTH

XS

S

M

L

XL

2XL

3XL

52,9

55,9

58,9

61,9

65,9

69,9

-

73,5

75

76

77

79

81

-

61,8

62,7

63,7

64,6

66,2

67,8

-

71,0

72,1

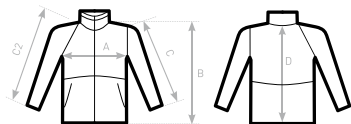
73,2

74,3

76,1

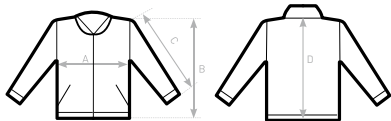
77,9

-

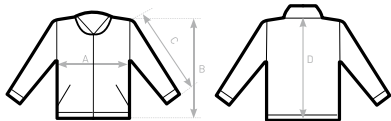


C2= RAGLAN

B&C CORPORATE 3-IN-1 JU 873	XS	S	M	L	XL	2XL	3XL
A HALF CHEST	55	58	61	64	67	70	73
B BODY LENGTH FROM NECK POINT	81	82,5	84	85,5	87	88,5	90
C SLEEVE LENGTH	65,5	67	68,5	70	71,5	73	74,5
D CENTER BACK LENGTH	78,5	80	81,5	83	84,5	86	87,5



B&C CREW BOMBER /MEN JM 961	XS	S	M	L	XL	2XL	3XL
A HALF CHEST	-	56	59	62	65	68	71
B BODY LENGTH FROM NECK POINT	-	68	70	72	74	76	78
C SLEEVE LENGTH	-	66	67,5	69	70,5	72	73,5
D CENTER BACK LENGTH	-	66,5	68,5	70,5	72,5	74,5	76,5



B&C CREW BOMBER /WOMEN JW 962

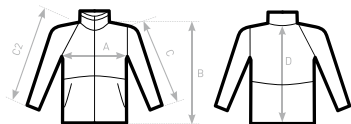
A HALF CHEST

B BODY LENGTH FROM NECK POINT

C SLEEVE LENGTH

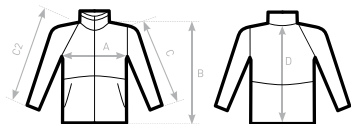
D CENTER BACK LENGTH

XS	S	M	L	XL	2XL
48	51	54	57	60	63
60	62	64	66	68	70
62	63,5	65	66,5	68	69,5
58	60	62	64	66	68



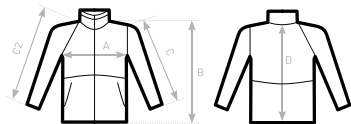
C2= RAGLAN

B&C MULTI-ACTIVE /MEN JM 825	XS	S	M	L	XL	2XL	3XL
A HALF CHEST	-	55	58	61	64	67	70
B BODY LENGTH FROM NECK POINT	-	72,5	74,5	76,5	78,5	80,5	82,5
C SLEEVE LENGTH	-	62,5	64	65,5	67	68,5	70
D CENTER BACK LENGTH	-	71	73	75	77	79	81



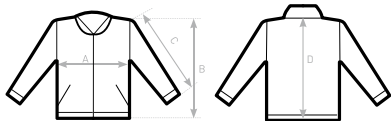
C2= RAGLAN

B&C MULTI-ACTIVE /WOMEN JW 826	XS	S	M	L	XL	2XL
A HALF CHEST	49	52	55	58	61	64
B BODY LENGTH FROM NECK POINT	69	71	73	75	77	79
C SLEEVE LENGTH	61	62	63	64	65	66
D CENTER BACK LENGTH	67	69	71	73	75	77

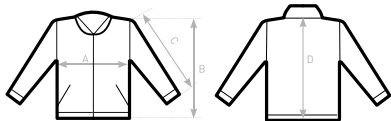


C2= RAGLAN

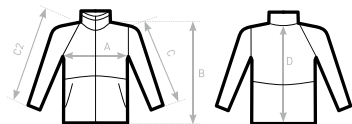
B&C OCEAN SHORE JU 824	XS	S	M	L	XL	2XL	3XL
A HALF CHEST	-	60	62,5	65	67,5	70	72,5
B BODY LENGTH FROM NECK POINT	-	74	76	78	80	82	84
C SLEEVE LENGTH	-	61,5	63	64,5	66	67,5	69
D CENTER BACK LENGTH	-	72	74	76	78	80	82



B&C TROOPER /MEN JM 963	XS	S	M	L	XL	2XL	3XL
A HALF CHEST	-	56	59	62	65	68	71
B BODY LENGTH FROM NECK POINT	-	68	70	72	74	76	78
C SLEEVE LENGTH	-	66,5	68	69,5	71	72,5	74
D CENTER BACK LENGTH	-	66,5	68,5	70,5	72,5	74,5	76,5

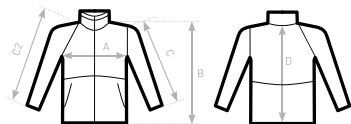


B&C TROOPER /WOMEN JW 964	XS	S	M	L	XL	2XL	3XL
A HALF CHEST	48	51	54	57	60	63	-
B BODY LENGTH FROM NECK POINT	60	62	64	66	68	70	-
C SLEEVE LENGTH	62	63,5	65	66,5	68	69,5	-
D CENTER BACK LENGTH	58,5	60,5	62,5	64,5	66,5	68,5	-



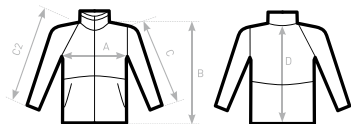
C2= RAGLAN

B&C SIROCCO JU 800	XS	S	M	L	XL	2XL	3XL
A HALF CHEST	-	59	64	69	74	79	84
B BODY LENGTH FROM NECK POINT	-	72	75	78	81	84	87
C SLEEVE LENGTH	-	55,5	57	58,5	60	61,5	63
D CENTER BACK LENGTH	-	71	74	77	80	83	86



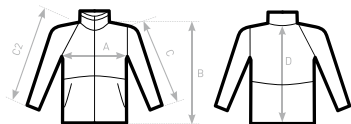
C2= RAGLAN

B&C SIROCCO /WOMEN JW 902	XS	S	M	L	XL	2XL	3XL
A HALF CHEST	50	52	54	56	58	60	-
B BODY LENGTH FROM NECK POINT	70	72	74	76	78	80	-
C SLEEVE LENGTH	61	63	65	67	69	71	-
D CENTER BACK LENGTH	69	71	73	75	77	79	-



C2= RAGLAN

B&C SIROCCO /KIDS JK 950	1/2	3/4	5/6	7/8	9/11	12/14
		98/104	110/116	122/128	134/146	152/164
A HALF CHEST	-	41	44	47	51	55
B BODY LENGTH FROM NECK POINT	-	48	52	56	61	66
C SLEEVE LENGTH	-	38	41	44	47	50
D CENTER BACK LENGTH	-	48	52	56	61	66

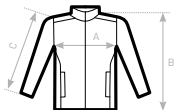


C2= RAGLAN

B&C AIR JU 801	XS	S	M	L	XL	2XL	3XL
A HALF CHEST	-	59	64	69	74	79	84
B BODY LENGTH FROM NECK POINT	-	72	75	78	81	84	87
C SLEEVE LENGTH	-	55,5	57	58,5	60	61,5	63
D CENTER BACK LENGTH	-	71	74	77	80	83	86



B&C ID. 601 JU 160	XS	S	M	L	XL	2XL	3XL
A HALF CHEST	-	54	57	60	63	66	69
B BODY LENGTH <small>AT CB</small>	-	70	72	74	76	78	80
C SLEEVE LENGTH	-	63,5	65	66,5	68	69,5	71



B&C ID. 601 /WOMEN JW 161

A HALF CHEST

B BODY LENGTH AT CB

C SLEEVE LENGTH

XS

S

M

L

XL

2XL

46

49

52

55

58

61

63

65

67

69

71

73

65

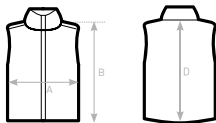
66,5

67,5

69

70

71,5



B&C BODYWARMER EXPLORER JU 880

A HALF CHEST

B BODY LENGTH FROM NECK POINT

D CENTER BACK LENGTH

XS

S

M

L

XL

2XL

3XL

-

60,5

62,5

64,5

66,5

68,5

70,5

-

66

68

70

72

74

76

-

71,5

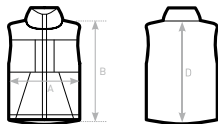
73,5

75,5

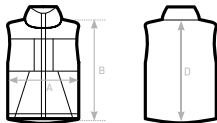
77,5

79,5

81,5



B&C ZEN+ /WOMEN JW 935	XS	S	M	L	XL	2XL	3XL
A HALF CHEST	52,5	55	57,5	60	62,5	65	-
B BODY LENGTH FROM NECK POINT RELAXED / WHEN WORN	59	60	61,5	62,5	63,5	64,5	-
D CENTER BACK LENGTH RELAXED / WHEN WORN	55	56	57	58	59	60	-



B&C BODYWARMER /MEN JM 930

A HALF CHEST

B BODY LENGTH FROM NECK POINT

D CENTER BACK LENGTH

XS

S

M

L

XL

2XL

3XL

-

58

60

62

65

67

69

-

67

69

71

73

77

79

-

71

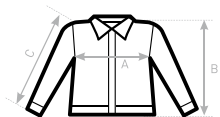
73

75

77

81

83



B&C DNM FRAME /M. JM D10	XS	S	M	L	XL	2XL	3XL
A HALF CHEST	-	50	53	56	59	62	65
B CENTER BACK LENGTH	-	63	65	67	69	71	73
C SLEEVE LENGTH	-	65,5	67	68,5	70	71,5	73



B&C DNM FRAME /W. JW D11	XS	S	M	L	XL	2XL	3XL
A HALF CHEST	47	50	53	56	59	62	-
B CENTER BACK LENGTH	50	51,5	53	54,5	56	57,5	-
C SLEEVE LENGTH	60	61,5	63	64,5	66	67,5	-



B&C DNM SUPREMACY /M. JM D14	XS	S	M	L	XL	2XL	3XL
A HALF CHEST	-	52	55	58	61	64	67
B CENTER BACK LENGTH	-	66	68	70	72	74	76
C SLEEVE LENGTH	-	65	66,5	68	69,5	71	72,5



B&C DNM SUPREMACY /W. JW D15	XS	S	M	L	XL	2XL	3XL
A HALF CHEST	48	51	54	57	60	63	-
B CENTER BACK LENGTH	55	57	59	61	63	66	-
C SLEEVE LENGTH	64	65,5	67	68,5	70	71,5	-